



REPUBLIC OF MALTA
a member of the European Union

TRANSPORT MALTA
CIVIL AVIATION DIRECTORATE

APPROVAL CERTIFICATE

Reference : MT.145.05

Pursuant to Regulation (EC) No 216/2008 of the European Parliament and of the Council and to Commission Regulation (EC) No 2042/2003 for the time being in force and subject to the conditions specified below, the Transport Malta Civil Aviation Directorate, hereby certifies:

Maintenance Centre Malta Ltd.

**Registered Address : Office No. 692, Mezzanine Level, Arrivals Hall,
Malta International Airport, Luqa LQA 4000, Malta**

Facility 1 : MCM Hangars Apron 3, Malta International Airport, Luqa, Malta

as a maintenance organisation in compliance with Section A of Annex II (Part-145) of Regulation (EU) No 1321/2014, approved to maintain products, parts and appliances listed in the attached approval schedule and issue related certificates of release to service using the above references.

CONDITIONS :


1. This approval is limited to that specified in the scope of work section of the approved maintenance organisation exposition as referred to in Section A of Annex II (Part-145), and
2. This approval requires compliance with the procedures specified in the approved maintenance organisation exposition, and
3. This approval is valid whilst the approved maintenance organisation remains in compliance with Annex II (Part-145) of Regulation (EU) No 1321/2014.
4. Subject to compliance with the foregoing conditions, this approval shall remain valid for an unlimited duration unless the approval has previously been surrendered, superseded, suspended or revoked.

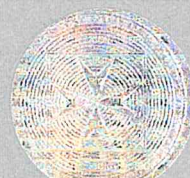
Date of Original Issue : **20th February 2009**

Date of this revision : **17th May 2021**

Revision No : **20**

Signed:-


f/Director General for Civil Aviation - Transport Malta Civil Aviation Directorate



MAINTENANCE ORGANISATION APPROVAL SCHEDULE

Reference: MT.145.05

Organisation Name : **MAINTENANCE CENTRE MALTA LIMITED**

Address : Office No. 692, Mezzanine Level, Arrivals Hall, Malta International Airport, Luqa, LQA 4000, Malta.

CLASS	RATING	LIMITATION	Base	Line
AIRCRAFT	A1 Aeroplanes above 5,700 Kg	Bombardier CL-600-1A11 Series Bombardier CL-600-2B16 Series Bombardier CL-600-2B19 Series Bombardier BD-100 Series Bombardier BD-700 Series Cessna 525B/C Cessna 550 Series Cessna 560 Series Cessna 680 Cessna 750 Learjet 35, 36,40, 45, 55, 60 Series Embraer EMB135/145 (RR Corp AE3007A) Gulfstream GV-SP/500/550 (RR BR710)	YES	YES
		Dassault Falcon 900 Series Dassault Falcon 2000 Series BAe125/Hawker 800/900 Series (Honeywell TFE 731)	NO	YES
	A2 Aeroplanes 5700 Kg and below	Cessna 500, 501, 551, 525, 525A Beechcraft 200 Series	YES	YES
COMPONENTS OTHER THAN COMPLETE ENGINES OR APU's	C4 Doors-Hatches	As described in MOE Chapter 1.9 'Scope of Work' and Appendix 2 to MOE (Capability List)		
	C5 Electrical Power			
	C6 Equipment			
	C8 Flight Controls			
	C14 Landing Gear			
	C20 Structure			

This approval schedule is limited to those products, parts and appliances and the activities specified in the scope of work section of the approved maintenance organisation exposition.

Maintenance Organisation Exposition reference : **MCM.MOE Issue 1 Revision 28**

Date of original issue : **2nd January 2009**

Date of last revision approved : **14th May 2021**

Signed :

f/Director General for Civil Aviation – Transport Malta Civil Aviation Directorate

